

重庆水泵厂有限责任公司简介

重庆水泵厂有限责任公司(原重庆水泵厂)是国内专业从事计量泵、往复泵、自平衡离心泵、低压离心泵以及以泵为主机的除磷系统和成套加药装置开发、研制、生产的主导企业。产品广泛用于石油、化工、煤化工、核工业、电力、国防等领域,并远销国外。

公司始建于1951年,现有员工900余人,高中级职称的工程技术和管理人员218人,国家级专家5人,生产加工设备570余台套,是国家机械工业和全国泵行业重点骨干企业,重庆质量效益型企业,中石油、中石化、中海油、中冶一级网络成员。50多年来,积淀了雄厚的技术装备和人力资源,为国民经济各行业提供了大批的优质产品。公司管理实现网络化。

公司产品技术开发中心获得国家认可,设有流体力学、流体机械、化工机械、给排水、中气及自动化控制等专业。公司拥有14项隔膜泵专利技术,5项离心泵专利技术,1项化工齿轮泵专利,1项环保产品专利,具有一、二、三类压力容器设计和制造资格。产品多次获得国家、部、市技术进步奖,优质产品奖等多项奖励。

公司质量保证体系:取得ISO9001国际质量体系认证和军工体系认证。产品开发、研制、设计、生产、检验、组装、测试以及售后服务等都有严密的组织机构和管理体系。

公司是西南地区泵类产品检测中心,产品检测手段完备:有高速动平衡机,万能试验机,探伤设备,金相显微镜,拉力试验机,冲击试验机,硬度试验机,碳硫分析仪,光谱分析仪等检验设备,设有力学实验室和理化分析室以及计量泵整机试验台、往复泵试验台、离心泵检测试验台、成套装置检测中心。

质量、品牌、信誉是我们永恒的追求,顾客满意是我们的宗旨!公司一贯坚持以顾客为中心,满足市场不断发展、变化的需求,我们愿与顾客精诚合作,互利双赢,共谋发展。公司全体员工衷心欢迎国内外的新老客户前来咨询、合作!

A brief introduction to Chongqing Pump Industry Co., Ltd.

Chongqing Pump Industry Co. Ltd. (former Chongqing Pump Works) is a leading enterprise in China of developing and manufacturing metering pump, reciprocating pump, self-balance centrifugal pump, and complete chemical feed system with metering pump as main machine, which are widely used in such fields as petroleum, chemical, coal chemical, unclear industry, power, national defense, etc. and exported oversea.

Initially established in 1951, the company has now more than 900 people and 218 of them are engineering staff and managerial personnel with titles of intermediate or senior professional post, including 5 experts at national level, and possesses over 570 production equipments, is one of flagship companies in the Chinese machinery industry and pump industry, a quality and benefit type enterprise and a member of the first class network of CNOOC, SINOPEC, CNOOC and CNMC. For over 50 years, the company has accumulated rich human resources and technical equipment, supplied large quantities of high quality products for the national economy, and realized the networked management in all aspects.

The company's technical development center which has been approved by the state offers such specialties as fluid mechanics, fluid machinery, chemical machinery, water supply and drainage, electrical control, and automatic control. The company is qualified for design and fabrication of classes 1, 2 and 3 pressure vessels, and possesses many patented technologies: 14 diaphragm pump technologies, 5 centrifugal pump technologies, 1 chemical gear pump technology, and 1 environmental protection product. Its products won Technical Progress Prize and High Quality Product Prize many times by the state, the ministry and the municipality.

The company won ISO 9001 Certificate and Certificate Conformity of Quality System Certification of Machinery Military Product Supplier, and has a compact organization and management system for product development, design, fabrication, assembly, inspection and test, and afterservice.

The company is also an inspection center in southwest China of pump products, set up a mechanics laboratory and a physicochemical analysis room, and has complete inspection and test equipment such as high-speed dynamic balancing machine, universal testing machine, flaw detector, metallurgical microscope, tension testing machine, impact testing machine, hardness tester, carbon-sulfur analyzer, spectral analyzer, computer-based test beds for metering pump, reciprocating pump and centrifugal pump, and test center for complete sets of equipment, etc.

Quality, brand and prestige are what our company pursues perpetually. Satisfying customers is our purpose. The company consistently perseveres in the principle of focusing the customer and meeting the ever-growing and ever-changing market. We are willing to sincerity cooperate with customers for mutually beneficial win-win, and common development, and warmly welcome the regular and new customers at home and abroad to consult and cooperate.

L J 计量泵

LJ Metering pump

LJ系列计量泵是我厂研制开发的新型计量泵，该泵在继承J系列计量泵技术优势的基础上，具有结构紧凑，可靠性高，适应性强的特点。该泵可计量输送腐蚀、磨蚀、易燃、易爆及浆料等各类介质，广泛用于石油、化工、医药、冶金、环保、食品等领域。

- 柱塞式和隔膜式两大类。柱塞泵最高排出压力可达50Mpa，隔膜泵可配置隔膜破裂监测报警装置，以确保输送介质无泄漏。LJ型泵流量：8～4000L/h，排出压力：≤50Mpa，输送介质温度：-60℃～400℃，粘度：≤6000mm²/s。

- 流量准确可调。泵在0～100%行程内可无级调节流量，在额定条件和最大相对行程处计量精度不低于±1%。

- 电机立式安装，结构紧凑，占地面积小。

- 液端可双头对置式布置，节能效果显著，压力脉动更小。双头泵在占地面积基本不变、电机功率略有增加的情况下，可实现泵流量成倍增加，从而满足用户改造需要，降低设备的采购成本。双泵头可输送不同介质，单台泵实现两台泵的功能，从而满足化工

The LJ series metering pumps are newly developed metering pumps which have advantages of compact structure, high reliability and adaptability besides technical superiority of J series metering pumps, suitable for corrosive, erosive, inflammable, explosive, and/or high solids content fluids in such fields as petroleum, chemical, medicine, metallurgy, environmental protection, food, etc.

- Two main types, the plunger and the diaphragm. The plunger metering pump offers discharge pressure up to 50 MPa; the diaphragm metering pump is provided with diaphragm rupture signaling preventing the metered and hydraulic fluids from intermixing in case of diaphragm rupture. The J series pumps can offer capacities 8 ~ 4000 l/h and discharge pressure up to 50 MPa, and transfer fluid of viscosity up to 6000 mm²/s and temperatures from -60 to 400°C .

- Accurate adjustment of capacity: The pump can be stepless regulated over a range of 0 ~ 100% stroke with a metering accuracy of ±1% at the rated operating condition and at the maximum stroke.

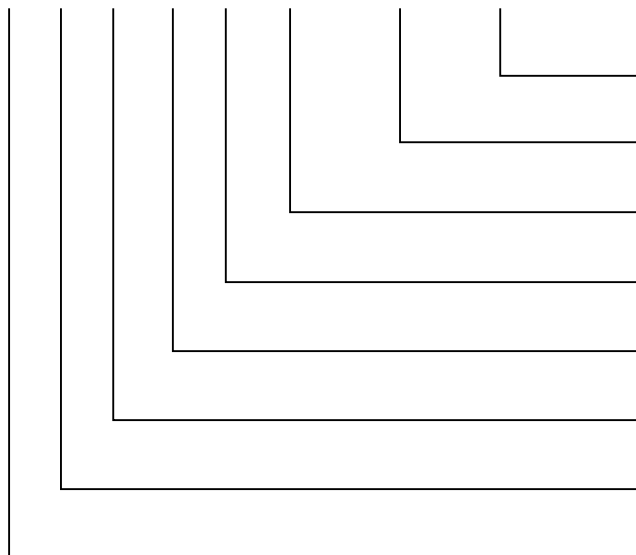
- With vertically mounted motor, the pump has a compact structure and a small footprint.

- Opposed pump heads bring about a striking results of energy conservation and less pressure pulsation, get twice the capacity with a

型号意义

Model Explanation For example

S L J₃ M 1000/1.0 — BY — IV



液缸过流部分主要材料代号 (表 1)
Code of materials for wetted parts (See Table 1)

特殊功能代号 (表 2)
Code of special function (See Table 2)

额定排出压力 Mpa
Rated discharge pressure, in MPa

额定流量 L / h
Rated capacity, in l / h

液缸结构：隔膜泵 (柱塞泵不标注)
Pump type: M means diaphragm type.
(Plunger type is without any sign)

计量泵机座号
Code of pump frame

电机立式安装
Vertically mounted motor

双头 (双头泵流量可比单头泵增大 1.2 - 1.8 倍)
Double head
(The double-head pump is 1.2 times to twice the capacity of a single-cylinder pump.)

配料和药剂添加中的同步调量要求。

- 排出压力低于 1.2Mpa, 输送温度低于 40°C时, LJ 型泵可配置带机械隔膜或液压隔膜的增强塑料型泵头, 在达到耐腐蚀和输送介质无泄漏效果的同时, 实现泵的经济适用性。

- 根据用户需要, LJ 型泵可派生高温型、高粘型、悬浮型及液化气型等具有特殊功能要求的计量泵。我厂备有各种规格和材料的安全阀、缓冲器(空气室)、背压阀、Y形过滤器、搅拌器、流量校正器等附件供用户配用。

slight increase in motor power, and function as two pumps for delivery of different liquids and low cost of equipment, meeting the requirements of synchronous dosing of chemicals.

- Optional mechanical or hydraulic diaphragm pump head is available for applications of discharge pressure less than 1.2 MPa and pumping temperature below 40°C, inexpensive but practical.

- Special-purpose metering pumps which were developed from the LJ series pumps can be supplied such as high temperature, high viscosity, suspension, and liquefied gas pumps. Complete ranges of safety valve, accumulator (damper), back-pressure valve, Y-strainer, agitator, and flow-rate calibrator of various materials are available.

液缸过流部分主要材料代号表
Code of Main Materials for Wetted Parts

表 1

材料代号 Code	III	IV	V	V B	V I	VII	VIII	IX	X	XII	S1
材料牌号 Grade	2Cr13	1Cr18Ni9Ti	1Cr18 Ni12Mo2Ti	316L	PVC	Monel	Hastelloy B	1Cr18 Ni12Mo3Ti	Hastelloy C	Ti	ABS

特殊功能代号
Code of Special Function

表 2

字母代号 Code	R1	R2	R3	GN	XF	A	YQ	BH	BY	T	TP
主要用途 Appl.	$T \leq 150^{\circ}\text{C}$	$150^{\circ}\text{C} < T < 250^{\circ}\text{C}$	$150^{\circ}\text{C} < T \leq 400^{\circ}\text{C}$	高粘度 High viscosity	悬浮液 Suspension	食用饮 料 Food	液 化 气 LNG	隔膜报警 Diaphragm rupture signaling		交流 调速 AC speed control	变频 调速 Frequency control
								化敏 With pressure probe	压敏(双隔膜) With conductivity probe		

订货注意事项

1、除常规定型产品外, 一般应填写“计量泵数据表”作为合同附件或在合同中注明特殊要求, 以确保所选型号满足用户使用要求。

2、计量泵供货范围: 泵、电机、联轴器、随机备件、专用工具、技术文件。

3、若需进出口配对法兰、地脚螺栓和管路附件、安全阀、缓冲器、背压阀、Y形过滤器、搅拌器、流量校正器等, 须在合同中注明, 价另计。

4、双泵头不同流量组合时泵速须相同。

Points for attention when ordering

1. Please fill in the Metering Pump Datasheet herein, as an attachment of a purchase contract, when ordering or give clear indication of special requirement in the contract, with the exception of the conventional product.

2. Scope of supply includes pump, motor, coupling, accompanying spare parts, special tool, and technical documents.

3. Mating flange, anchor bolt, pipe fittings, safety valve, damper, back-pressure valve, Y-strainer, agitator, flow calibrator, etc. if required, should be specified in a contract, and priced separately.

4. For the double-head pump, different flow rates must be combined at the same speed.

重庆水泵厂		计量泵数据表				用户名称			
						工程名称			
						工位号			
设备名称		泵型号		数量					
合同号		泵型式		第 页		共 页			
□ 操作条件									
1	介质名称				操作状态	□ 连续 □ 间断			
2	介质浓度	%			温度	○ 正常 °C ; 最高 °C ; 最低 °C			
3	介质特性	□ 腐蚀性 □ 磨蚀性 □ 有毒 □ 易燃易爆			流量	○ 最大 l/h ; 最小 l/h ; 正常 l/h			
4	固体含量	wt% 湿基	粒度	<mm	排出压力	○ 额定 MPaG ; 最大 MPaG			
5	入□ 状态下	密度	kg/m ³		入口压力	○ 额定 MPaG ; 最大 MPaG			
		粘度	mPaS		压差	○ 额定 MPaG ; 最大 MPa			
		汽化压力	MPaA		NPSHa	m			
□ 现场条件									
6	安装位置	□ 室内 □ 室外			大气压力	○ 平均 KPaA			
7	□ 环境温度	○ 平均 °C ; 最高 : °C 最低 : °C			工厂条件	○ 高电压 V ; 低电压 V			
8	□ 相对湿度	%			危险区类别				
○ 泵 性 能									
9	○ 额定流量	l/h			△ 流量 调节	方式 □ 变速 □ 调行程			
10	○ 额定排压	MPaG				方法 □ 电动 □ 气动 □ 手动 □ 变频			
11	○ 柱塞直径	mm	○ 行程长度	mm	○ 计量精度 %				
12	○ 往复次数	min ⁻¹	△ 调节范围	%	○ NPSHr m				
△ 结 构									
13	液 力 端	型式	□ 柱塞 □ 单隔膜 □ 双隔膜 □ 机械隔膜			动 力 端	型式		○ 直联 ○ 变速箱 ○ 皮带传动
			□ 单缸 □ 单作用 □ 双作用				润滑方式		○ 曲柄连杆 ○ 偏心轮
		阀型式	○ 锥阀 ○ 板阀 ○ 单球阀 ○ 双球阀				○ 油浴 ○ 强制		
	设计压力	MPaG							
14	接管	DN(mm)	PN(MPa)	密封面	方位	冷却水		部位	○ 填料函 ○ 夹套 ○ 传动箱
15	○ 入口				□ 水平 □ 垂直			介质	○ 循环水 ○ 自来水
16	○ 出口				□ 水平 □ 垂直			○ 流量	m ³ /h ○ 压力 MPaG
17	填料形式	□ 方形盘根 □ V形			加热		部位		○ 液缸夹套 ○ 柱塞 ○ 缸盖
18	○ 填料环	外径	mm ; 内径	mm ;	(保温)		介质		○ 蒸汽 ○ 热水 ○ 热介质
		材料:	数量 :				○ 流量		l/h ○ 压力 MPaG
□ 辅助设备									
19	入 □ 缓冲器	型式	□ 囊式 □ 气液接触式			□ 安全阀	DN	mm ; 设定压力	MPaG
		○ 容积	L	△ 压力	MPaG	□ 背压阀	DN	mm ; 压力	MPaG
20	出 □ 缓冲器	型式	□ 囊式 □ 气液接触式			□ 过滤器	DN	mm ;	
		○ 容积	L	△ 压力	MPaG	□ 止回阀	DN	mm ; 压力	MPaG
21	隔膜破裂报警器		○ 压敏式 ○ 化敏式						
22	变频器		□ 型号						

重庆水泵厂		计量泵数据表 (续表)			用户名称		
					工程名称		
					标准规范		GB/T7782-1996或API675
设备名称		泵型号		<input type="checkbox"/> 询价 <input type="checkbox"/> 投标 <input type="checkbox"/> 采购			
合同号		泵型式		第	页	共	页
△材 料							
24	缸体		柱塞		柱塞衬套		阀弹簧
25	阀座		隔膜		填料		垫片
26	阀(球)		活塞杆		活塞环		
△电 动 机							
27	生产厂				<input type="checkbox"/> 防爆等级		
28	型号				<input type="checkbox"/> 防护等级		
29	电源	V/3ph/50Hz			<input type="checkbox"/> 绝缘等级		
30	额定功率	kW	<input type="checkbox"/> 转速	r/min	<input type="checkbox"/> 特殊要求		
31	进线方式	<input type="checkbox"/> 电缆 <input type="checkbox"/> 钢管布线					
<input type="checkbox"/> 试 验 见 证							
32	机械运转试验	<input type="checkbox"/> 见证 <input type="checkbox"/> 非见证			性能 试验	复现性精度	<input type="checkbox"/> 见证 <input type="checkbox"/> 非见证
33	水压试验	<input type="checkbox"/> 见证 <input type="checkbox"/> 非见证				稳定性精度	<input type="checkbox"/> 见证 <input type="checkbox"/> 非见证
		试验压力	MPaG			线性度	<input type="checkbox"/> 见证 <input type="checkbox"/> 非见证
34	<input type="checkbox"/> 特殊要求						
<input type="checkbox"/> 供 货 范 围							
35	<input type="checkbox"/> 泵	<input type="checkbox"/> 随机备件			缓冲器, <input type="checkbox"/> 吸入; <input type="checkbox"/> 排出		
36	<input type="checkbox"/> 电动机	<input type="checkbox"/> 专用工具			<input type="checkbox"/> 润滑系统		
37	<input type="checkbox"/> 变频器	<input type="checkbox"/> 过滤器			<input type="checkbox"/> 控制仪表		
38	<input type="checkbox"/> 联轴器与护罩	<input type="checkbox"/> 背压阀			<input type="checkbox"/> 两年备件(附清单)。		
39	<input type="checkbox"/> 底座	<input type="checkbox"/> 安全阀					
40	<input type="checkbox"/> 地脚螺栓	<input type="checkbox"/> 止回阀					
41	<input type="checkbox"/> 进出口配对法兰	<input type="checkbox"/> 进出口垫片					
△出厂资料							
42	<input type="checkbox"/> 合格证	<input type="checkbox"/> 使用说明书					
○ 重 量							
43	泵	kg	底座	kg	总重	kg	
44	电机	kg	最大维修件	kg			
说 明							
45	1、 <input type="checkbox"/> 由买方填写 <input type="checkbox"/> 由制造厂填写 <input type="checkbox"/> 双方共同填写						
46	2、用户未填写部分均视为普通要求,按 GB/T7782-1996《计量泵》技术要求办理。						
47							
48							
49							
50							

CHONGQING PUMP INDUSTRY CO. LTD.		METERING PUMP DATA SHEET				Client				
						Project				
						Item No.				
Equipment		Model		Qty.						
Contract No.		Type		Page No.:		/	Rev.:			
<input type="checkbox"/> OPERATION CONDITION (EACH PUMP)										
1	Fluid			Operation	<input type="checkbox"/> Continuous <input type="checkbox"/> Intermittent					
2	Density	%		Temp.	<input type="checkbox"/> Nor. ℃; <input type="checkbox"/> Max. ℃; <input type="checkbox"/> Min. ℃					
3	Property	<input type="checkbox"/> Corrosive <input type="checkbox"/> Toxic <input type="checkbox"/> Flammable <input type="checkbox"/> Explosive		Capacity	<input type="checkbox"/> Rated l/h; <input type="checkbox"/> Max. l/h; <input type="checkbox"/> Min. l/h					
4	Solids	Wt% wet basis	Grain size <mm	Discharge pressure	<input type="checkbox"/> Rated MPa; <input type="checkbox"/> Max. MPa; <input type="checkbox"/> Min. MPa					
5	@ inlet conduction	Density	kg/m ³	Inlet press.	<input type="checkbox"/> Rated: MPa; <input type="checkbox"/> Max. MPa; <input type="checkbox"/> Min. MPa					
		Viscosity	MPa·S	Diff. Press.	<input type="checkbox"/> Rated: MPa; <input type="checkbox"/> Max. MPa; <input type="checkbox"/> Min. MPa					
		Vapor press.	MPa A	NPSHa	M					
<input type="checkbox"/> SITE DATA										
6	Location	<input type="checkbox"/> Indoor <input type="checkbox"/> Outdoor <input type="checkbox"/> Heated <input type="checkbox"/> Unheated			Elevation	M				
7	<input type="checkbox"/> Ambient Temp.	Mean: ℃; <input type="checkbox"/> Max.: ℃; <input type="checkbox"/> Min. ℃			Plant utility	Hi-volt. V;	Low-volt V			
8	<input type="checkbox"/> Relative humidity	%			Area classification	Class	Div. Group			
<input type="checkbox"/> PUMP PERFORMANCE										
9	<input type="checkbox"/> Rated capacity	l/h		△ Capacity control	Method <input type="checkbox"/> Speed <input type="checkbox"/> Stroke					
10	<input type="checkbox"/> Rated discharge pressure	MPa			Method <input type="checkbox"/> Electric <input type="checkbox"/> Pneumatic <input type="checkbox"/> Hand <input type="checkbox"/> Frequency					
11	<input type="checkbox"/> Plunger diameter	mm	<input type="checkbox"/> Stroke length	mm	<input type="checkbox"/> Metering accuracy ±1%					
12	<input type="checkbox"/> Stroke/min	min ⁻¹	△Control range	0 ~ 100%	<input type="checkbox"/> NPSHr m					
<input type="checkbox"/> CONSTRUCTION										
13	Liquid End	Type	<input type="checkbox"/> Plunger <input type="checkbox"/> Single diaphragm <input type="checkbox"/> Double diaphragm <input type="checkbox"/> Mechanical diaphragm			Power End	Type	<input type="checkbox"/> Direct <input type="checkbox"/> Gear <input type="checkbox"/> Belt		
			<input type="checkbox"/> Single-cylinder <input type="checkbox"/> Single-acting <input type="checkbox"/> Double-acting					<input type="checkbox"/> Crank and connecting rod <input type="checkbox"/> Eccentric wheel		
		Valve type	<input type="checkbox"/> Cone <input type="checkbox"/> Plate <input type="checkbox"/> Single ball <input type="checkbox"/> Double ball				Lubrication	<input type="checkbox"/> Oil bath <input type="checkbox"/> Forced		
		Design pressure	MPa G							
14	Nozzle	DN(mm)	PN(MPa)	Face	Position	Cooling water	Area	<input type="checkbox"/> Stiffing box <input type="checkbox"/> Jacket <input type="checkbox"/> Trans. case		
15	Inlet				Fluid		<input type="checkbox"/> Circ. water <input type="checkbox"/> Run. water			
16	Outlet				Flow		Press.			
17	Packing	<input type="checkbox"/> Square <input type="checkbox"/> V-shape			Heating (Insulation)	Area	Cyl. jacket Plunger Cyl. cover			
18	Packing ring	Out. dia. mm; In. dia. mm;		Material:		Qty.	Fluid	Steam Hot water Hot medium		
							Flow	L/h	<input type="checkbox"/> Press.	MPa
<input type="checkbox"/> ACCESSORIES										
19	Inlet damper	Type	Bladder	Gas-liquid contact	<input type="checkbox"/> Safety valve		DN	mm;	Set. press. : MPa	
		<input type="checkbox"/> Volume	L	△Pressure	MPa	<input type="checkbox"/> B.P. valve		DN	mm;	Pressure: MPa
20	Outlet damper	Type	Bladder	Gas-liquid contact	<input type="checkbox"/> Filter		DN	mm;	Pressure: MPa	
		<input type="checkbox"/> Volume	L	△Pressure	MPa	<input type="checkbox"/> Check valve		DN	mm;	Pressure: MPa
21	Diaphragm rupture signaling		<input type="checkbox"/> Pressure sensitive <input type="checkbox"/> Conductivity							
22	Frequency converter		<input type="checkbox"/> Type							

CHONGQING PUMP INDUSTRY CO. LTD.		METERING PUMP DATA SHEET				Client			
						Project			
						Item No.			
Equipment		Model		Qty.					
Contract No.		Type		Page No.:		/	Rev.		
△ MATERIAL									
23	Cylinder	Plunger		Packing					
24	Valve seat	Diaphragm		Gasket					
25	Valve (ball)	Piston rod							
△ ELECTRIC MOTOR									
26	Manufacturer				<input type="checkbox"/> Explosion-proof				
27	Type				<input type="checkbox"/> Protection grade				
28	Power supply	V Ph Hz			<input type="checkbox"/> Insulation grade				
29	Rated power	KW	<input type="checkbox"/> Speed	r/min	<input type="checkbox"/> Special requirement				
30	Cable entry method	<input type="checkbox"/> Cable <input type="checkbox"/> Steel conduit							
□ TEST / INSPECTION									
31	Mech. operation	<input type="checkbox"/> WIT <input type="checkbox"/> NO-WIT		Performance	Repeatability	<input type="checkbox"/> WIT <input type="checkbox"/> NO-WIT			
32	Hydrostatic	<input type="checkbox"/> WIT <input type="checkbox"/> NO-WIT			Stability	<input type="checkbox"/> WIT <input type="checkbox"/> NO-WIT			
		Test press.: MPa			Linearity	<input type="checkbox"/> WIT <input type="checkbox"/> NO-WIT			
33	<input type="checkbox"/> Special requirements								
NORMAL SCOPE OF SUPPLY				OPTIONAL PARTS					
34	Pump		<input type="checkbox"/> Anchor bolt		<input type="checkbox"/> Check valve				
35	Electric motor		<input type="checkbox"/> Mating flanges of inlet and outlet		Damper: <input type="checkbox"/> Inlet; <input type="checkbox"/> Outlet				
36	Coupling and guard		<input type="checkbox"/> Gaskets for inlet and outlet		<input type="checkbox"/> Lubrication system				
37	Accompanying spare parts		<input type="checkbox"/> Filter		<input type="checkbox"/> Control instrument				
38	Special tools		<input type="checkbox"/> Back-pressure valve		<input type="checkbox"/> Two year spare parts				
39	Certificate		<input type="checkbox"/> Safety valve						
40	Operation Instructions		<input type="checkbox"/> Frequency converter						
WEIGHT									
41	Pump	kg		Baseplate	kg		Total kg		
42	Motor	kg		Max. maintenance part	kg				
43	Outline dimensions: L: mm		Width: mm		Height: mm				
REMARKS									
44	<input type="checkbox"/> INDICATES INFORMATION TO BE COMPLETED BY PURCHASER <input type="checkbox"/> BY MANUFACTURER <input type="checkbox"/> BY BOTH SIDES								
45	ITEMS NOT SELECTED IS CONSIDERED AS THOSE OF GENERAL REQUIREMENTS, AND DETERMINED ACCORDING TO THE STANDARD GB/T7792-1996 METERING PUMP.								
46									
47									
48									
48									
50									

LJ₃ 型柱塞计量泵性能参数
Table of Performance Parameter, Plunger Metering Pump LJ₃

型号 Model	流量 Rated capacity L/h	排出压力 Rated pressure MPa	柱塞 直径 Plunger dia. mm	行程 Stroke length mm	泵速 Pump speed min-1	电动机 Motor		进口 直径 Inlet dia. mm	出口 直径 Outlet dia. mm	重量 Weight kg
						型号 Model	功率 Power kW			
LJ ₃ -8/50.0	8	25-50.0	8	32	102	Y(YB)802-4V1	0.75	8	8	~ 190
LJ ₃ -10/50.0	10	50.0			126	Y(YB)90L-4V1	1.5			
LJ ₃ -10/40.0		20-40.0			Y(YB)802-4V1	0.75				
LJ ₃ -13/50.0	13	40-50.0	102		Y(YB)90L-4V1	1.5				
LJ ₃ -13/32.0		16-32.0			Y(YB)802-4V1	0.75				
LJ ₃ -16/50.0	16	32-50.0	126		Y(YB)90L-4V1	1.5				
LJ ₃ -16/25.0		10.0-25			Y(YB)802-4V1	0.75				
LJ ₃ -20/40.0	20	20.0-40.0	102		Y(YB)90L-4V1	1.5				
LJ ₃ -20/20.0		10-20.0			Y(YB)802-4V1	0.75				
LJ ₃ -25/40.0	25	20-40.0	126		Y(YB)90L-4V1	1.5				
LJ ₃ -25/16.0		8.0-16.0			Y(YB)802-4V1	0.75				
LJ ₃ -32/32.0	32	16-32.0	102		Y(YB)90L-4V1	1.5				
LJ ₃ -32.12.5		6.3-12.5			Y(YB)802-4V1	0.75				
LJ ₃ -40/25.0	40	12.5-25	126		Y(YB)90L-4V1	1.5				
LJ ₃ -40/10.0		5.0-10.0			Y(YB)802-4V1	0.75				
LJ ₃ -50/20.0	50	10-20.0	102		Y(YB)90L-4V1	1.5				
LJ ₃ -50/8.0		4.0-8.0			Y(YB)802-4V1	0.75				
LJ ₃ -63/16.0	63	8.0-16.0	126		Y(YB)90L-4V1	1.5				
LJ ₃ -63/6.3		3.2-6.3			Y(YB)802-4V1	0.75				
LJ ₃ -80/12.5	80	6.3-12.5	102		Y(YB)90L-4V1	1.5				
LJ ₃ -80/5.0		2.5-5.0			Y(YB)802-4V1	0.75				
LJ ₃ -100/10.0	100	5.0-10.0	126		Y(YB)90L-4V1	1.5				
LJ ₃ -100/4.0		2.0-4.0			Y(YB)802-4V1	0.75				
LJ ₃ -125/8.0	125	4.0-8.0	102		Y(YB)90L-4V1	1.5				
LJ ₃ -125/3.2		1.6-3.2		Y(YB)802-4V1	0.75					
LJ ₃ -160/6.3	160	3.2-6.3	126	Y(YB)90L-4V1	1.5					
LJ ₃ -160/2.5		1.3-2.5		Y(YB)802-4V1	0.75					
LJ ₃ -200/5.0	200	2.5-5.0	102	Y(YB)90L-4V1	1.5					
LJ ₃ -200/2.0		1.0-2.0		Y(YB)802-4V1	0.75					
LJ ₃ -250/4.0	250	2.0-4.0	126	Y(YB)90L-4V1	1.5					
LJ ₃ -250/1.6		0.8-1.6		Y(YB)802-4V1	0.75					
LJ ₃ -320/3.2	320	1.6-3.2	102	Y(YB)90L-4V1	1.5					
LJ ₃ -320/1.3		0.6-1.3		Y(YB)802-4V1	0.75					
LJ ₃ -400/2.5	400	1.3-2.5	126	Y(YB)90L-4V1	1.5					
LJ ₃ -400/1.0		0.5-1.0		Y(YB)802-4V1	0.75					
LJ ₃ -500/2.0	500	1.0-2.0	102	Y(YB)90L-4V1	1.5					
LJ ₃ -500/0.8		0.4-0.8		Y(YB)802-4V1	0.75					
LJ ₃ -630/1.6	630	0.8-1.6	126	Y(YB)90L-4V1	1.5					
LJ ₃ -630/0.63		0.4-0.63		Y(YB)802-4V1	0.75					
LJ ₃ -800/1.3	800	0.63-1.3	102	Y(YB)90L-4V1	1.5					
LJ ₃ -800/0.5		0.1-0.5		Y(YB)802-4V1	0.75					
LJ ₃ -1000/1.0	1000	0.5-1.0	126	Y(YB)90L-4V1	1.5					
LJ ₃ -1000/0.4		0.1-0.4		Y(YB)802-4V1	0.75					
LJ ₃ -1250/0.8	1250	0.1-0.8	102	Y(YB)90L-4V1	1.5	40	40	~ 230		
LJ ₃ -1600/0.63	1600	0.1-0.63	126							

LJ₃-M 型隔膜计量泵性能参数
Table of Performance Parameter, Diaphragm Metering Pump LJ₃-M

型号 Model	流量 Rated capacity L/h	排出压力 Rated pressure MPa	柱塞 直径 Plunger dia. mm	行程 Stroke length mm	泵速 Pump speed min-1	电动机 Motor		进口 直径 Inlet dia. mm	出口 直径 Outlet dia. mm	重量 Weight kg
						型号 Model	功率 Power kW			
LJ ₃ -M20/20.0	20	10-20.0	16	32	102	Y(YB)802-4V1	0.75	10	10	~ 220
LJ ₃ -M25/20.0	25	20.0			126	Y(YB)90L-4V1	1.5			
LJ ₃ -M25/16.0		8.0-16.0				Y(YB)802-4V1	0.75			
LJ ₃ -M32/20.0	32	16-20.0	18		102	Y(YB)90L-4V1	1.5			
LJ ₃ -M32/12.5		6.3-12.5				Y(YB)802-4V1	0.75			
LJ ₃ -M40/20.0	40	12.5-20.0			21	126	Y(YB)90L-4V1			
LJ ₃ -M40/10.0		5.0-10.0	Y(YB)802-4V1				0.75			
LJ ₃ -M50/20.0	50	10.0-20.0	25			102	Y(YB)90L-4V1	1.5	15	
LJ ₃ -M50/8.0		4.0-8.0			Y(YB)802-4V1		0.75			
LJ ₃ -M63/16.0	63	8.0-16.0			126	Y(YB)90L-4V1	1.5			
LJ ₃ -M63/6.3		3.2-6.3				Y(YB)802-4V1	0.75			
LJ ₃ -M80/12.5	80	6.3-12.5	32		102	Y(YB)90L-4V1	1.5			
LJ ₃ -M80/5.0		2.5-5.0		Y(YB)802-4V1		0.75				
LJ ₃ -M100/10.0	100	5.0-10.0		126	Y(YB)90L-4V1	1.5				
LJ ₃ -M100/4.0		2.0-4.0			Y(YB)802-4V1	0.75				
LJ ₃ -M125/8.0	125	4.0-8.0	40	102	Y(YB)90L-4V1	1.5	20	20		
LJ ₃ -M125/3.2		1.6-3.2			Y(YB)802-4V1	0.75				
LJ ₃ -M160/6.3	160	3.2-6.3		126	Y(YB)90L-4V1	1.5				
LJ ₃ -M160/2.5		1.3-2.5			Y(YB)802-4V1	0.75				
LJ ₃ -M200/5.0	200	2.5-5.0	50	102	Y(YB)90L-4V1	1.5				
LJ ₃ -M200/2.0		1.0-2.0			Y(YB)802-4V1	0.75				
LJ ₃ -M250/4.0	250	2.0-4.0		126	Y(YB)90L-4V1	1.5				
LJ ₃ -M250/1.6		0.8-1.6			Y(YB)802-4V1	0.75				
LJ ₃ -M320/3.2	320	1.6-3.2	65	102	Y(YB)90L-4V1	1.5	25	25		
LJ ₃ -M320/1.3		0.6-1.3			Y(YB)802-4V1	0.75				
LJ ₃ -M400/2.5	400	1.3-2.5		126	Y(YB)90L-4V1	1.5				
LJ ₃ -M400/1.0		0.5-1.0			Y(YB)802-4V1	0.75				
LJ ₃ -M500/2.0	500	1.0-2.0	80	102	Y(YB)90L-4V1	1.5				
LJ ₃ -M500/0.8		0.4-0.8			Y(YB)802-4V1	0.75				
LJ ₃ -M630/1.6	630	0.8-1.6		126	Y(YB)90L-4V1	1.5				
LJ ₃ -M630/0.6		0.4-0.6			Y(YB)802-4V1	0.75				
LJ ₃ -M800/1.3	800	0.6-1.3	100	102	Y(YB)90L-4V1	1.5	32	32		
LJ ₃ -M800/0.5		0.1-0.5			Y(YB)802-4V1	0.75				
LJ ₃ -M1000/1.0	1000	0.5-1.0		126	Y(YB)90L-4V1	1.5				
LJ ₃ -M1000/0.4		0.1-0.4			Y(YB)802-4V1	0.75				
LJ ₃ -M1250/0.8	1250	0.1-0.8	126	102	Y(YB)90L-4V1	1.5			40	40
LJ ₃ -M1600/0.6	1600	0.1-0.6								

LJ₄ 型柱塞计量泵性能参数
Table of Performance Parameter, Plunger Metering Pump LJ₄

型号 Model	流量 Rated capacity L/h	排出压力 Rated pressure MPa	柱塞直径 Plunger dia. mm	行程 Stroke length mm	泵速 Pump speed min-1	电动机 Motor		进口直径 Inlet dia. mm	出口直径 Outlet dia. mm	重量 Weight kg						
						型号 Model	功率 Power kW									
LJ ₄ -32/50.0	32	50.0	13	50	91	Y(YB)112M-4V1	4	10	10	~ 280						
LJ ₄ -32/40.0		32-40.0				Y(YB)100L1-4V1	2.2									
LJ ₄ -40/50.0	40	50.0			115	Y(YB)112M-4V1	4									
LJ ₄ -40/40.0		32-40.0				Y(YB)100L1-4V1	2.2									
LJ ₄ -50/50.0	50	40.0-50.0	16		91	Y(YB)112M-4V1	4				15	15				
LJ ₄ -50/32.0		25-32.0				Y(YB)100L1-4V1	2.2									
LJ ₄ -63/40.0	63	32-40.0			115	Y(YB)112M-4V1	4									
LJ ₄ -63/25.0		20-25.0				Y(YB)100L1-4V1	2.2									
LJ ₄ -80/40.0	80	25-40.0	20		91	Y(YB)112M-4V1	4							20	20	
LJ ₄ -80/20.0		16-20.0				Y(YB)100L1-4V1	2.2									
LJ ₄ -100/32.0	100	20-32.0			115	Y(YB)112M-4V1	4									
LJ ₄ -100/16.0		12.5-16				Y(YB)100L1-4V1	2.2									
LJ ₄ -125/25.0	125	16-25.0	25	91	Y(YB)112M-4V1	4	25	25								
LJ ₄ -125/12.5		10-12.5			Y(YB)100L1-4V1	2.2										
LJ ₄ -160/20.0	160	12.5-20		115	Y(YB)112M-4V1	4										
LJ ₄ -160/10.0		8.0-10.0			Y(YB)100L1-4V1	2.2										
LJ ₄ -200/16.0	200	10-16.0	32	91	Y(YB)112M-4V1	4				32	32					
LJ ₄ -200/8.0		6.3-8.0			Y(YB)100L1-4V1	2.2										
LJ ₄ -250/12.5	250	8.0-12.5		115	Y(YB)112M-4V1	4										
LJ ₄ -250/6.3		5.0-6.3			Y(YB)100L1-4V1	2.2										
LJ ₄ -320/10.0	320	6.3-10.0	40	91	Y(YB)112M-4V1	4							40	40	~ 300	
LJ ₄ -320/5.0		4.0-5.0			Y(YB)100L1-4V1	2.2										
LJ ₄ -400/8.0	400	5.0-8.0		115	Y(YB)112M-4V1	4										
LJ ₄ -400/4.0		3.2-4.0			Y(YB)100L1-4V1	2.2										
LJ ₄ -500/6.3	500	4.0-6.3	50	91	Y(YB)112M-4V1	4	50	25								
LJ ₄ -500/3.2		2.5-3.2			Y(YB)100L1-4V1	2.2										
LJ ₄ -630/5.0	630	3.2-5.0		115	Y(YB)112M-4V1	4										
LJ ₄ -630/2.5		2.0-2.5			Y(YB)100L1-4V1	2.2										
LJ ₄ -800/4.0	800	2.5-4.0	65	91	Y(YB)112M-4V1	4				65	32					
LJ ₄ -800/2.0		1.6-2.2			Y(YB)100L1-4V1	2.2										
LJ ₄ -1000/3.2	1000	2.0-3.2		115	Y(YB)112M-4V1	4										
LJ ₄ -1000/1.6		1.3-1.6			Y(YB)100L1-4V1	2.2										
LJ ₄ -1250/2.5	1250	1.6-2.5	80	91	Y(YB)112M-4V1	4							80	40		
LJ ₄ -1250/1.3		1.0-1.3			Y(YB)100L1-4V1	2.2										
LJ ₄ -1600/2.0	1600	1.3-2.0		115	Y(YB)112M-4V1	4										
LJ ₄ -1600/1.0		0.8-1.0			Y(YB)100L1-4V1	2.2										
LJ ₄ -2000/1.6	2000	1.0-1.6	100	91	Y(YB)112M-4V1	4	100	50								
LJ ₄ -2000/0.8		0.4-1.6			Y(YB)100L1-4V1	2.2										
LJ ₄ -2500/1.3	2500	0.8-1.3		115	Y(YB)112M-4V1	4										
LJ ₄ -2500/0.6		0.4-0.6			Y(YB)100L1-4V1	2.2										
LJ ₄ -3200/1.0	3200	0.6-1.0	125	91	Y(YB)112M-4V1	4				50	50					
LJ ₄ -3200/0.5		0.1-0.5			Y(YB)100L2-4V1	3										
LJ ₄ -4000/0.8	4000	0.5-0.8		115	Y(YB)112M-4V1	4										
LJ ₄ -4000/0.4		0.1-0.4			Y(YB)100L2-4V1	3										

LJ₄-M 型隔膜计量泵性能参数
Table of Performance Parameter, Diaphragm Metering Pump LJ₄-M

型号 Model	流量 Rated capacity L/h	排出压力 Rated pressure MPa	柱塞 直径 Plunger dia. mm	行程 Stroke length mm	泵速 Pump speed min-1	电动机 Motor		进口 直径 Inlet dia. mm	出口 直径 Outlet dia. mm	重量 Weight kg	
						型号 Model	功率 Power kW				
LJ ₄ -M50/20.0	50	20.0	18	50	91	Y(YB)100L1-4V1	2.2	10	10	~ 300	
LJ ₄ -M63/20.0	63	20.0			115						
LJ ₄ -M80/20.0	80	20.0	21		91	Y(YB)100L1-4V1	2.2	15	15		
LJ ₄ -M100/20.0	100	20.0			115	Y(YB)112M-4V1	4				
LJ ₄ -M100/16.0		12.5-16				Y(YB)100L1-4V1	2.2				
LJ ₄ -M125/20.0	125	16-20.0	26		90	Y(YB)112M-4V1	4	20	20		~ 310
LJ ₄ -M125/12.5		10-12.5				Y(YB)100L1-4V1	2.2				
LJ ₄ -M160/20.0	160	12.5-20			115	Y(YB)112M-4V1	4				
LJ ₄ -M160/10.0		8.0-10.0				Y(YB)100L1-4V1	2.2				
LJ ₄ -M200/16.0	200	10.0-16	32		90	Y(YB)112M-4V1	4				
LJ ₄ -M200/8.0		6.3-8.0				Y(YB)100L1-4V1	2.2				
LJ ₄ -M250/12.5	250	8-12.5			115	Y(YB)112M-4V1	4				
LJ ₄ -M250/6.3		5.0-6.3				Y(YB)100L1-4V1	2.2				
LJ ₄ -M320/10.0	320	6.3-10.0	42		90	Y(YB)112M-4V1	4	25	25	~ 310	
LJ ₄ -M320/5.0		4.0-5.0				Y(YB)100L1-4V1	2.2				
LJ ₄ -M400/8.0	400	5.0-8.0			115	Y(YB)112M-4V1	4				
LJ ₄ -M400/4.0		3.2-4.0				Y(YB)100L1-4V1	2.2				
LJ ₄ -M500/6.3	500	4.0-6.3			50	90	Y(YB)112M-4V1				4
LJ ₄ -M500/3.2		2.5-3.2					Y(YB)100L1-4V1				2.2
LJ ₄ -M630/5.0		630	3.2-5.0			115	Y(YB)112M-4V1	4			
LJ ₄ -M630/2.5			2.0-2.5	Y(YB)100L1-4V1			2.2				
LJ ₄ -M800/4.0	800	2.5-4.0	65	90	Y(YB)112M-4V1	4	32	32	~ 350		
LJ ₄ -M800/2.0		1.6-2.0			Y(YB)100L1-4V1	2.2					
LJ ₄ -M1000/3.2	1000	2.0-3.2		115	Y(YB)112M-4V1	4					
LJ ₄ -M1000/1.6		1.3-1.6			Y(YB)100L1-4V1	2.2					
LJ ₄ -M1250/2.5	1250	1.6-2.5	80	90	Y(YB)112M-4V1	4	40	40			
LJ ₄ -M1250/1.3		1.0-1.3			Y(YB)100L1-4V1	2.2					
LJ ₄ -M1600/2.0	1600	1.3-2.0		115	Y(YB)112M-4V1	4					
LJ ₄ -M1600/1.0		0.8-1.0			Y(YB)100L1-4V1	2.2					
LJ ₄ -M2000/1.6	2000	1.0-1.6	100	90	Y(YB)112M-4V1	4	50	50			
LJ ₄ -M2000/0.8		0.4-0.8			Y(YB)100L1-4V1	2.2					
LJ ₄ -M2500/1.3	2500	0.8-1.3		115	Y(YB)112M-4V1	4					
LJ ₄ -M2500/0.6		0.4-0.6			Y(YB)100L1-4V1	2.2					
LJ ₄ -M3200/1.0	3200	0.63-1.0	125	90	Y(YB)112M-4V1	4	50	50			
LJ ₄ -M3200/0.5		0.1-0.5			Y(YB)100L2-4V1	3					
LJ ₄ -M4000/0.8	4000	0.5-0.8		115	Y(YB)112M-4V1	4					
LJ ₄ -M4000/0.4		0.1-0.4			Y(YB)100L2-4V1	3					

LJ₃ 型柱塞计量泵外形安装尺寸表
Table of Outline & Installation Dimensions, Plunger Metering Pump LJ₃

型 号	DN	D	D ₁	D ₂	do	h ₁	h ₂	h ₃	I	L	L ₁	H	H ₁	H ₂	A ₁	A ₂	A ₃	B	B ₁	B ₂	B ₃	d ₁		
LJ ₃ -8/25.0-50.0	8	100	70	18	13.5	170	170	43	80	605														
LJ ₃ -10/20.0-50.0																								
LJ ₃ -13/16.0-50.0																								
LJ ₃ -16/12.5-50.0																								
LJ ₃ -20/10.0-40.0																								
LJ ₃ -25/8.0-40.0																								
LJ ₃ -32/6.3-32.0	10	125	85	22	17.5	178	178	50	618	605														
LJ ₃ -40/5.0-20.0																								
LJ ₃ -50/4.0-20.0																								
LJ ₃ -63/3.2-16.0	100	70	24	13.5	201	201	55	100	628	633	160	548	150	25	365	415	245	453	185	235	288	19		
LJ ₃ -80/2.5-12.5																								
LJ ₃ -100/2.0-10.0																								
LJ ₃ -125/1.6-8.0																								
LJ ₃ -160/1.3-6.3																								
LJ ₃ -200/1.0-5.0																								
LJ ₃ -250/0.8-4.0	20	105	75	30	213	213	60	645	673															
LJ ₃ -320/0.6-3.2																								
LJ ₃ -400/0.5-2.5																								
LJ ₃ -500/0.4-2.0	25	115	85	35	245	245	65	633	645	673														
LJ ₃ -630/0.4-1.6	32	140	100	42	17.5	271	271	65	645	673														
LJ ₃ -800/0.1-1.3																								
LJ ₃ -1000/0.1-1.0																								
LJ ₃ -1250/0.1-0.8	40	165	125	50	18.5	284	284	69	115	673														
LJ ₃ -1600/0.1-0.6																								

LJ₃-M 型隔膜计量泵外形安装尺寸表
Table of Outline & Installation Dimensions, Diaphragm Metering Pump LJ₃-M

型 号	DN	D	D ₁	D ₂	do	h ₁	h ₂	h ₃	I	L	L ₁	H	H ₁	H ₂	A ₁	A ₂	A ₃	B	B ₁	B ₂	B ₃	d ₁					
LJ ₃ -MF20/10-20	10	125	85	22	17.5	240	240	50	138	675																	
LJ ₃ -MF25/8.0-20						238	238		138	675																	
LJ ₃ -MF32/6.3-20						15	105		75	24														228	228	153	680
LJ ₃ -MF40/5.0-20																										142	670
LJ ₃ -MF50/4.0-20.0	20	105	75	30	13.5	238	238	55	120	648	160	548	150	25	365	415	245	453	185	235	288	19					
LJ ₃ -MF63/3.2-16.0																											
LJ ₃ -MF80/2.5-12.5																											
LJ ₃ -MF100/2.0-10.0	25	115	85	35	232	232	60	132	665																		
LJ ₃ -MF125/1.6-8.0																											
LJ ₃ -MF160/1.3-6.3																											
LJ ₃ -MF200/1.0-5.0																											
LJ ₃ -MF250/0.8-4.0	32	140	100	42	17.5	282	282	65	151	695																	
LJ ₃ -MF320/0.6-3.2																											
LJ ₃ -MF400/0.5-2.5																											
LJ ₃ -MF500/0.4-2.0	40	170	125	50	22	323	323	68	201	761																	
LJ ₃ -MF630/0.4-1.6																											
LJ ₃ -MF800/0.1-1.3																											
LJ ₃ -MF1000/0.1-1.0																											
LJ ₃ -MF1250/0.1-0.8																											
LJ ₃ -MF1600/0.1-0.6																											

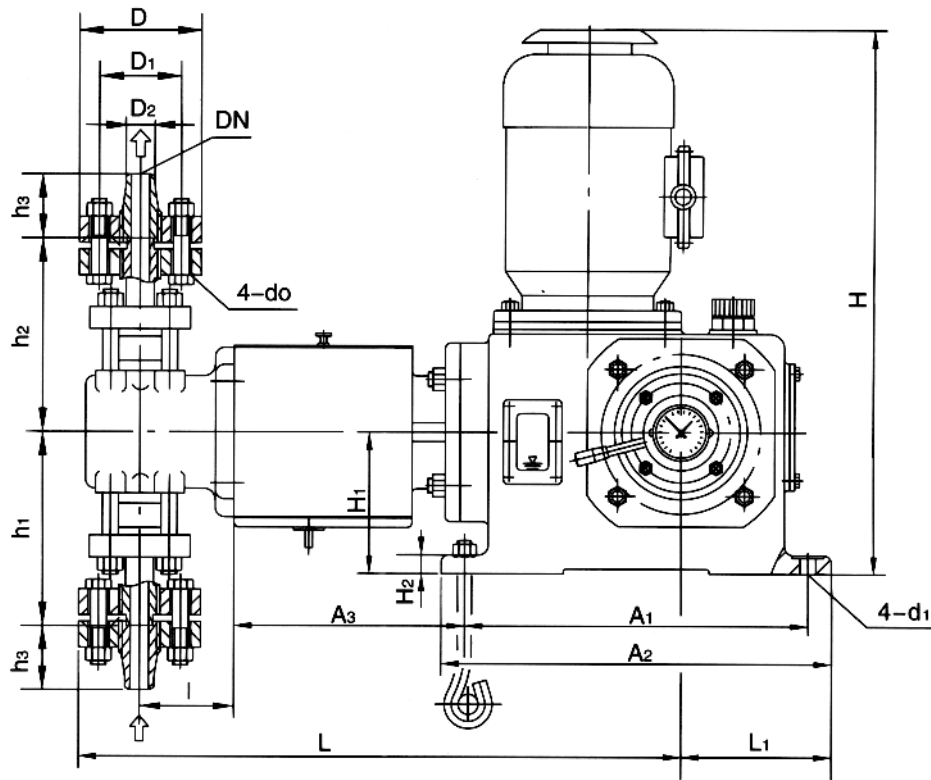
LJ₄ 型柱塞计量泵外形安装尺寸表
Table of Outline & Installation Dimensions, Plunger Metering Pump LJ₄

型 号	DN	D	D ₁	D ₂	do	h ₁	h ₂	h ₃	I	L	L ₁	H	H ₁	H ₂	A ₁	A ₂	A ₃	B	B ₁	B ₂	B ₃	d ₁
LJ ₄ -32/32.0-50.0	10	90	65	22	17.5	184	184	50	90	745	210	721	220	30	520	570	275	587	260	310	347	22
LJ ₄ -40/32.0-50.0										768												
LJ ₄ -50/25.0-50.0																						
LJ ₄ -63/20.0-40.0																						
LJ ₄ -80/16.0-40.0	15	130	90	24	17.5	192	192	50	90	765												
LJ ₄ -100/12.5-32.5																						
LJ ₄ -125/10.0-25.0																						
LJ ₄ -160/8.0-20.0																						
LJ ₄ -200/6.3-16.0	20	130	90	30	17.5	215	215	55	90	765												
LJ ₄ -250/5.0-12.5																						
LJ ₄ -320/4.0-10.0																						
LJ ₄ -400/3.2-8.0																						
LJ ₄ -500/2.5-6.3	25	140	100	35	17.5	245	245	60	90	765												
LJ ₄ -630/2.0-5.0																						
LJ ₄ -800/1.6-4.0	32	155	110	42	22	296	296	65	110	800												
LJ ₄ -1000/1.3-3.2										805												
LJ ₄ -1250/1.0-2.5	40	170	125	50	17.5	316	316	68	110	805												
LJ ₄ -1600/0.8-2.0										803												
LJ ₄ -2000/0.4-1.6		165		60		17.5	319			319	125	818										
LJ ₄ -2500/0.1-1.3																						
LJ ₄ -3200/0.1-1.0	50	165	125	60	17.5	319	319	125	818													
LJ ₄ -4000/0.1-0.8																						

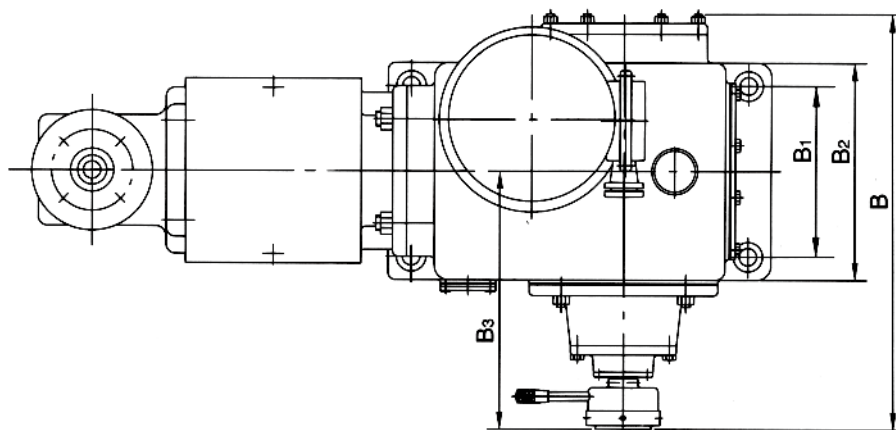
LJ₄-M 型隔膜计量泵外形安装尺寸表
Table of Outline & Installation Dimensions, Diaphragm Metering Pump LJ₄-M

型 号	DN	D	D ₁	D ₂	do	h ₁	h ₂	h ₃	I	L	L ₁	H	H ₁	H ₂	A ₁	A ₂	A ₃	B	B ₁	B ₂	B ₃	d ₁
LJ ₄ -M50/20.0	15	130	90	24	17.5	208	208	50	100	775	210	721	220	30	520	570	275	587	260	310	347	22
LJ ₄ -M63/20.0																						
LJ ₄ -M80/16.0-20.0																						
LJ ₄ -M100/12.5-16.0																						
LJ ₄ -M125/10.0-12.5	20	130	90	30	17.5	315	315	55	100	775												
LJ ₄ -M160/8.0-20.0																						
LJ ₄ -M200/6.3-16.0	25	140	100	35	17.5	242	242	60	132	812												
LJ ₄ -M250/5.0-12.5																						
LJ ₄ -M320/4.0-10.0																						
LJ ₄ -M400/3.2-8.0																						
LJ ₄ -M500/2.5-6.3	32	140	100	42	17.5	283	283	65	150	830												
LJ ₄ -M630/2.0-5.0																						
LJ ₄ -M800/1.6-4.0	40	150	110	50	17.5	324	324	68	153	838												
LJ ₄ -M1000/1.3-3.2																						
LJ ₄ -M1250/1.0-2.5																						
LJ ₄ -M1600/0.8-2.0																						
LJ ₄ -M2000/0.4-1.6	50	165	125	60	17.5	369	369	175	868													
LJ ₄ -M2500/0.4-1.3																						
LJ ₄ -M3200/0.1-1.0	50	165	125	60	17.5	369	369	175	868													
LJ ₄ -M4000/0.1-0.8																						

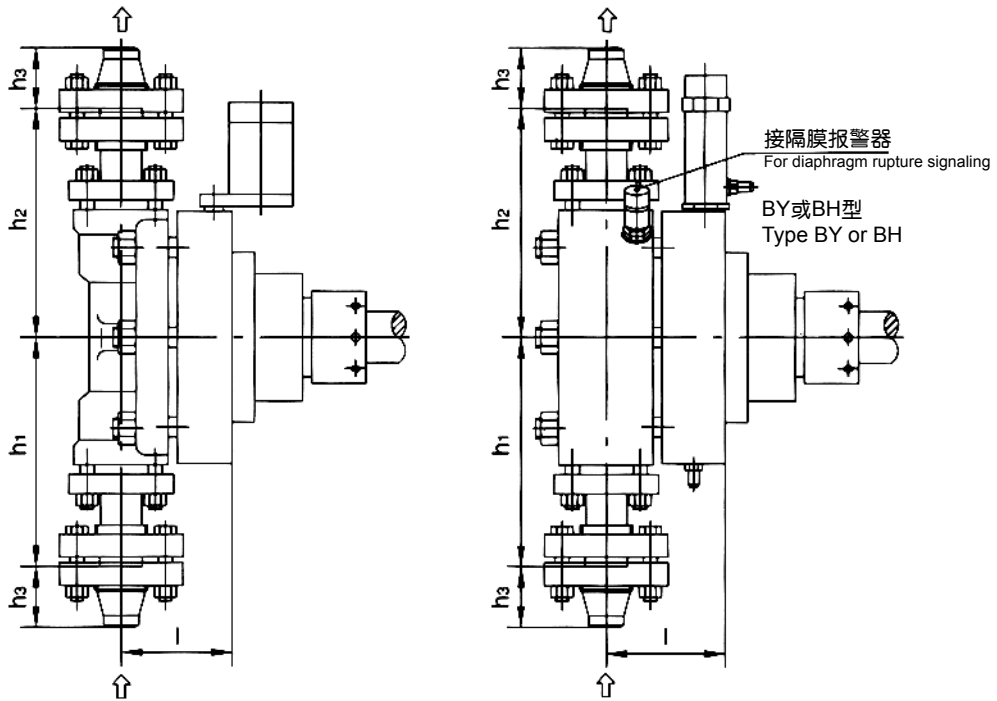
LJ 系列计量泵外形及安装尺寸图
Outline & Installation Dimensions Diagram, LJ Series Metering Pumps



柱塞计量泵
Plunger Metering Pump

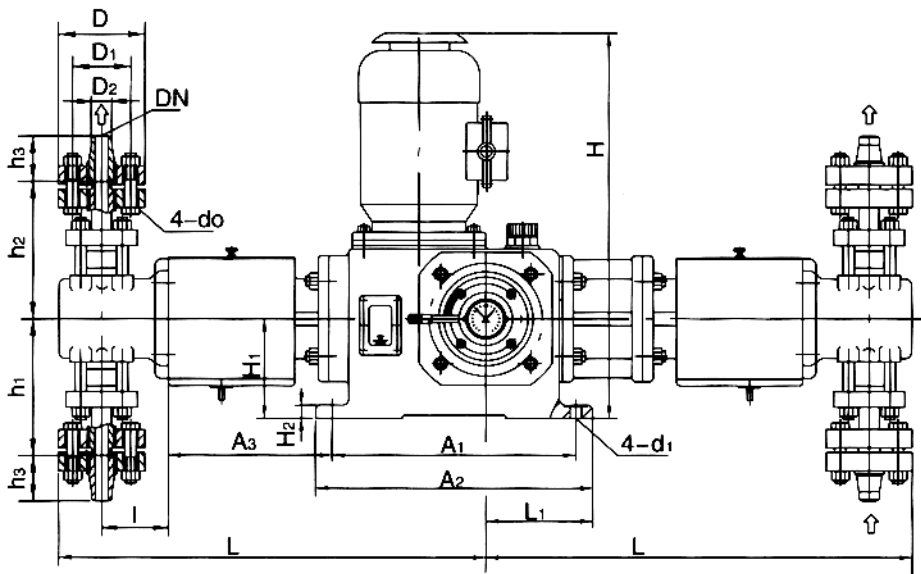


LJ 系列计量泵外形及安装尺寸图
Outline & Installation Dimensions Diagram, LJ Series Metering Pumps



M 型隔膜计量泵头
Type M Diaphragm Metering Pump Head

MF 型隔膜计量泵头
Type MF Diaphragm metering Pump Head



SLJ 系列双头计量泵
SLJ Series Double-head Metering Pump